

Sail	Luff	Leach	Foot	Wgt.	Area
Mainsail	32' 11"	34' 8"	12' 5"	7.2oz	270sq.ft.
Jib	33' 9"	30' 2"	11' 7"	7.2oz	176sq.ft.
Genoa	33' 9"	30' 8"	16' 1"	4.4oz	247sq.ft.
Spinnaker	36'	36'	23'	.75ozN	825sq.ft.
Storm Jib	17'	12' 11"	9' 11"	8oz	59sq.ft.
<b>R. Furling Jib</b>					
R. Furling Jib	31' 9"	29' 4"	11' 2"	7.2oz	163sq.ft.
<b>R. Furling Genoa</b>					
R. Furling Genoa	31' 9"	29' 11"	15' 8"	4.4oz	231sq.ft.
<b>Storm Spinnaker</b>					
Storm Spinnaker	32'	32'	19'	1.5ozN	550sq.ft.

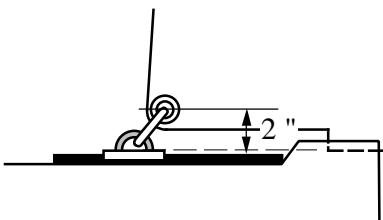
**NOTES:**

Mylar may be used for all sails.  
 Sailcloth wgt. may be varied to suit wind in area sailed.  
 All sails are to be fitted with telltales  
 Tack and Clew cutaways to be as shown  
 Mainsail has 2 sets of reefpoints positioned as shown  
 Max. Mainsail roach is 2' 10" located 60% up leach.  
 Mainsail to have Cunningham eye fitted  
 Mainsail wear patches to be fitted as shown  
 Class emblem to be located and sized as shown.  
 Mainsail battens to be angled as shown for easy roller furling  
 Jib to have four leach battens placed at equal distance on leach. Four Leach battens on Genoa are optional  
 Foresail hanks to be bronze and for 1/4" wire  
 Roller furling sails to have #6 Luff tape for Harken Unit 1 Series B Roller Furler.

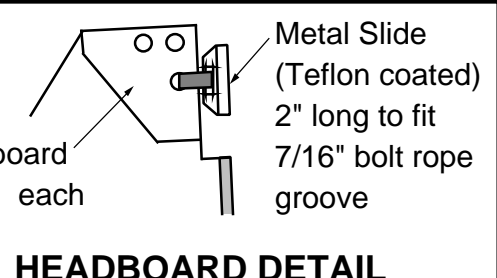
**RECOMMENDED MAINSAIL CAMBER:**

Top Third 10% at 44% aft  
 Middle 12% at 48% aft  
 Bottom Third 6% at 46% aft

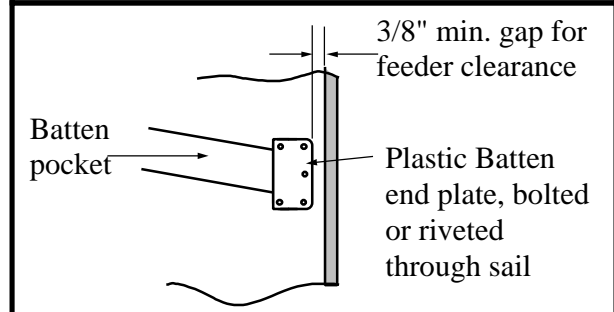
Mast pre-bend is 3"  
 Maximum headstay tension is 2700lbs, luff sag is 4-5"



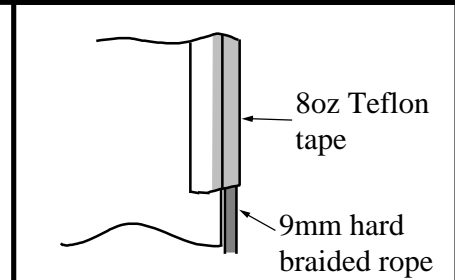
**CLEW POSITION**



**HEADBOARD DETAIL**

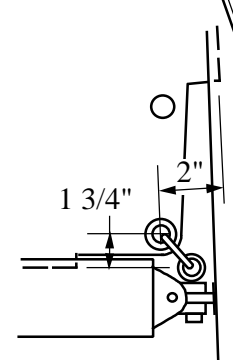


**BATTEN END DETAIL**

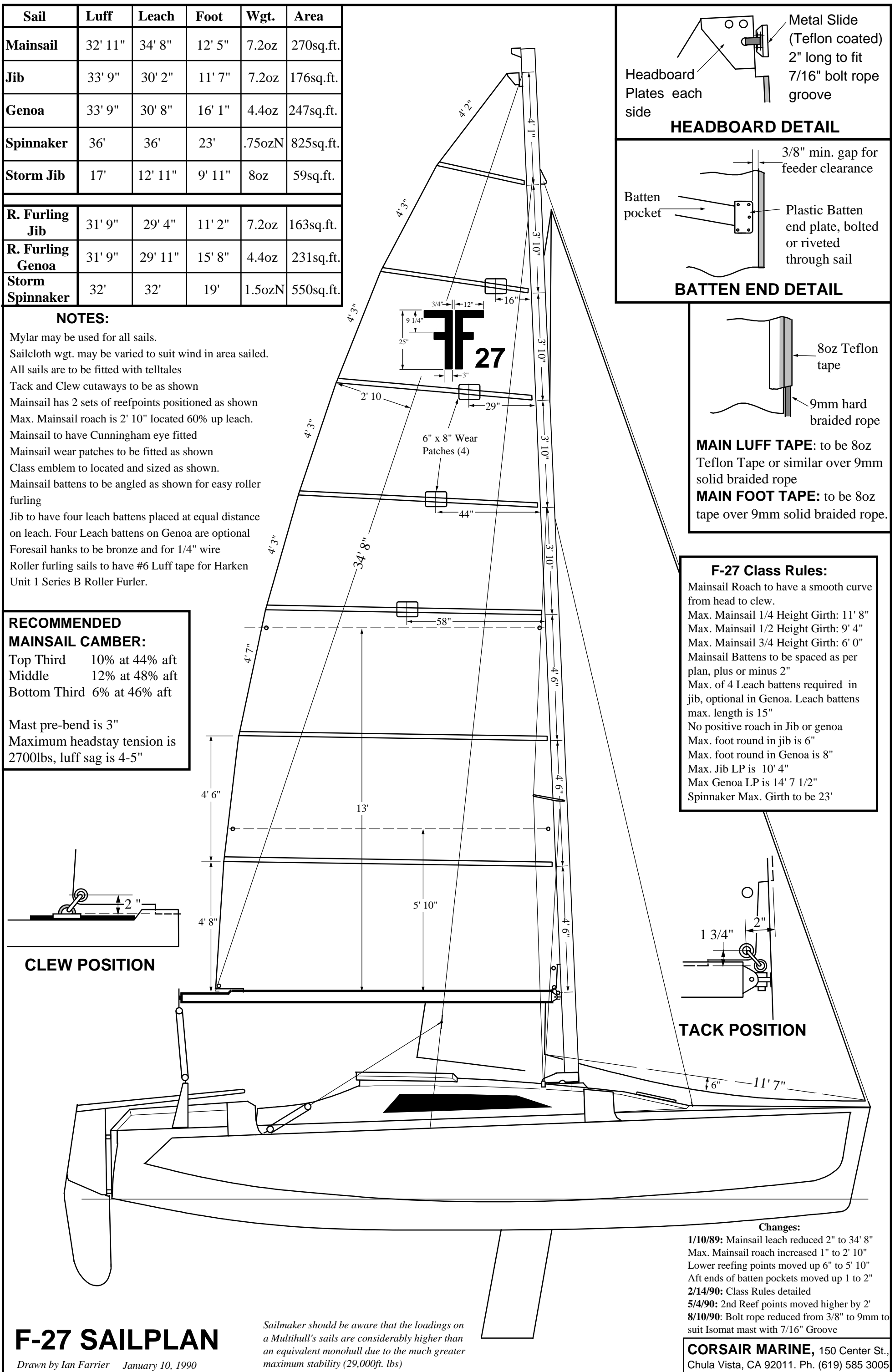


**MAIN LUFF TAPE:** to be 8oz Teflon Tape or similar over 9mm solid braided rope  
**MAIN FOOT TAPE:** to be 8oz tape over 9mm solid braided rope.

**F-27 Class Rules:**  
 Mainsail Roach to have a smooth curve from head to clew.  
 Max. Mainsail 1/4 Height Girth: 11' 8"  
 Max. Mainsail 1/2 Height Girth: 9' 4"  
 Max. Mainsail 3/4 Height Girth: 6' 0"  
 Mainsail Battens to be spaced as per plan, plus or minus 2"  
 Max. of 4 Leach battens required in jib, optional in Genoa. Leach battens max. length is 15"  
 No positive roach in Jib or genoa  
 Max. foot round in jib is 6"  
 Max. foot round in Genoa is 8"  
 Max. Jib LP is 10' 4"  
 Max Genoa LP is 14' 7 1/2"  
 Spinnaker Max. Girth to be 23'



**TACK POSITION**



**Changes:**

**1/10/89:** Mainsail leach reduced 2" to 34' 8"  
 Max. Mainsail roach increased 1" to 2' 10"  
 Lower reefing points moved up 6" to 5' 10"  
 Aft ends of batten pockets moved up 1 to 2"  
**2/14/90:** Class Rules detailed  
**5/4/90:** 2nd Reef points moved higher by 2'  
**8/10/90:** Bolt rope reduced from 3/8" to 9mm to suit Isomat mast with 7/16" Groove

**CORSAIR MARINE**, 150 Center St., Chula Vista, CA 92011. Ph. (619) 585 3005

**F-27 SAILPLAN**

Drawn by Ian Farrier January 10, 1990

*Sailmaker should be aware that the loadings on a Multihull's sails are considerably higher than an equivalent monohull due to the much greater maximum stability (29,000ft. lbs)*